

CAMP RIPLEY SENTINEL LANDSCAPE

Minnesota | Est. 2016



Located along the northern stretch of the Mississippi River, Camp Ripley is the primary National Guard Training Center for units from Minnesota, North Dakota, South Dakota, Wisconsin, Iowa, Ohio, and Illinois.

The agricultural and forested lands surrounding Camp Ripley enable the installation to conduct aircraft, live fire, artillery, IED, and winter training with limited restrictions. The large unfragmented landscape also protects water quality of the upper Mississippi River and its four major tributaries. However, the rural character of the area is threatened by incompatible development that could significantly affect Camp Ripley's ability to fulfill its mission, convert historic farms, ranches, and forested lands into other uses, and adversely affect one of the most ecologically rich environments and important source water areas in the Midwest.

Recognizing the need to protect this landscape, the Minnesota legislature passed state law 190.33, in May 2015. Under the law, the adjutant general convened a Sentinel Landscape Coordinating Committee to identify the boundaries of the Camp Ripley Sentinel Landscape and develop a suite of tools and programs that could provide technical and financial assistance to interested landowners within the sentinel landscape. With input from local government, stakeholders, and Federal agency partners, the Coordinating Committee identified the desired outcomes of the Camp Ripley Sentinel Landscape partnership: protecting the installation's military training mission and the landscape's wildlife management areas, watersheds, and agricultural resources. In 2016, Camp Ripley was designated as a federal Sentinel Landscape representing the formal partnership agreement between the U.S. Departments of Defense, Agriculture, and Interior.

Landscape Strategies



Outreach and Coordination

Landowners, Partnerships

Coordination between CRSL partners and landowner outreach are essential to implementing the Landscape Strategies, which are targeted to privately owned lands.



ACUB Land Protection

Easements & Acquisitions

The goal of the Army Compatible Use Buffer (ACUB) Agreement Area is to protect lands for the military mission of Camp Ripley while also protecting and enhancing working lands, natural resources, habitat, and climate resilience.

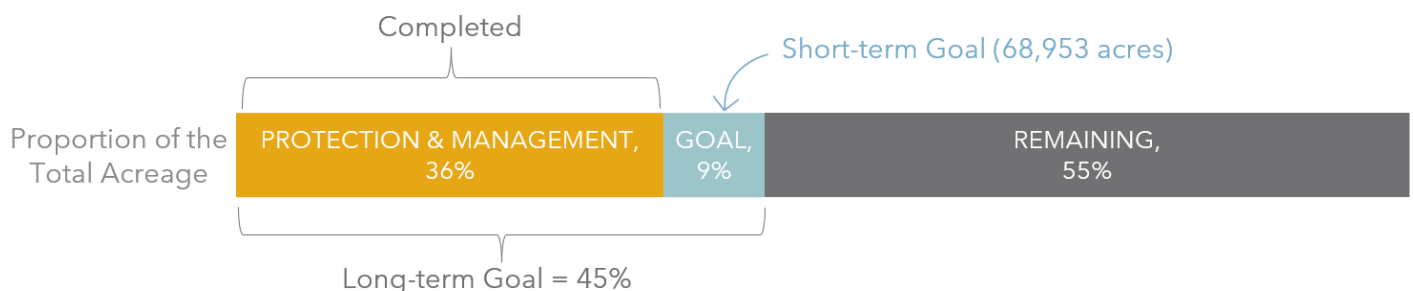


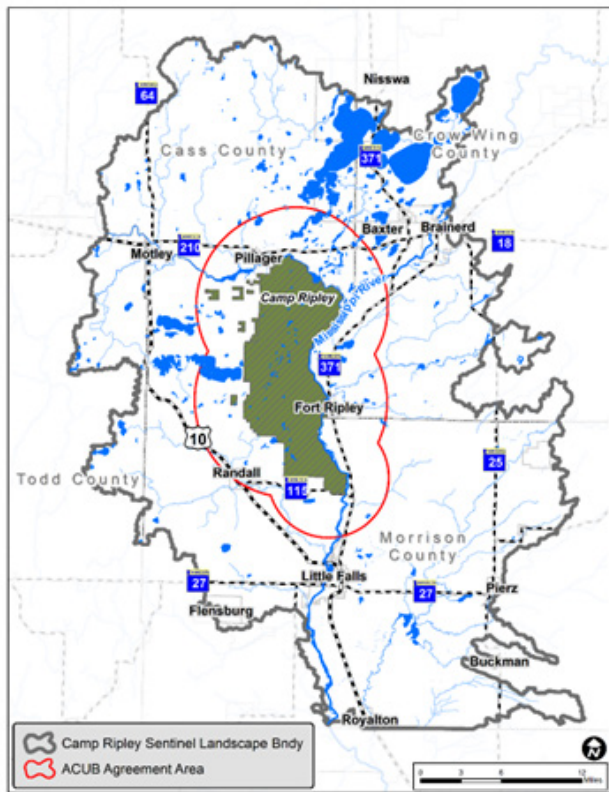
CRSL Protection & Management

*Easements & Acquisitions
Best Management Practices*

The CRSL aims to "keep farms farms and forests forests", and work with partner agencies to implement Best Management Practices (BMPs) in working lands and permanent protection of forested and sensitive lands to benefit surface water, groundwater, and habitat quality.

CRSL Goal Progress





Total CRSL Area
849,253 acres

Camp Ripley Training Center
52,758 acres

Long-Term Goal
45% of CRSL protected or managed with BMPs

CRSL Partnership

There is no one entity solely responsible for the management of natural resources within the CRSL. Rather, there are numerous agencies and organizations with varying and sometimes overlapping roles and authorities. Identifying partners and clarifying roles is important to the successful implementation of this plan.

Partner agencies listed to the right have been involved in the development of this plan and past implementation. Agencies and organizations that have not been involved in the planning process are welcomed and encouraged to get involved in implementing this plan.



CAMP RIPLEY
SENTINEL LANDSCAPE



Landscape Coordinator Contact:
Todd Holman
campriley@sentinellandscapes.org